

## LGT-164 Installation

When installing your LGT-164 Kit, the bracket shown below will mount differently, depending on which pedal assembly you have in your golf car. The wiring will be the same no matter which pedal assembly you have.

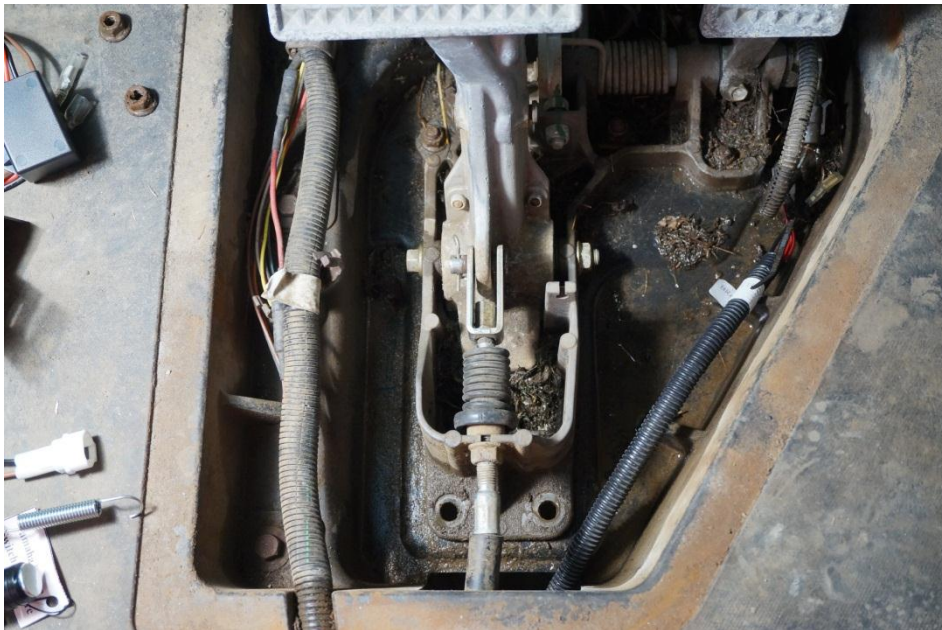
Your LGT-164 is made up of the following components.

- *LGT-166: Brake switch, Yamaha G22, Drive*
- *LGT-142: Plug & Play brake light timer 12 volt*
- *LGT-162: Sub Harness, brake switch female connector*
- *LGT-165: Bracket, brake switch with hardware, Yamaha G22, Drive*

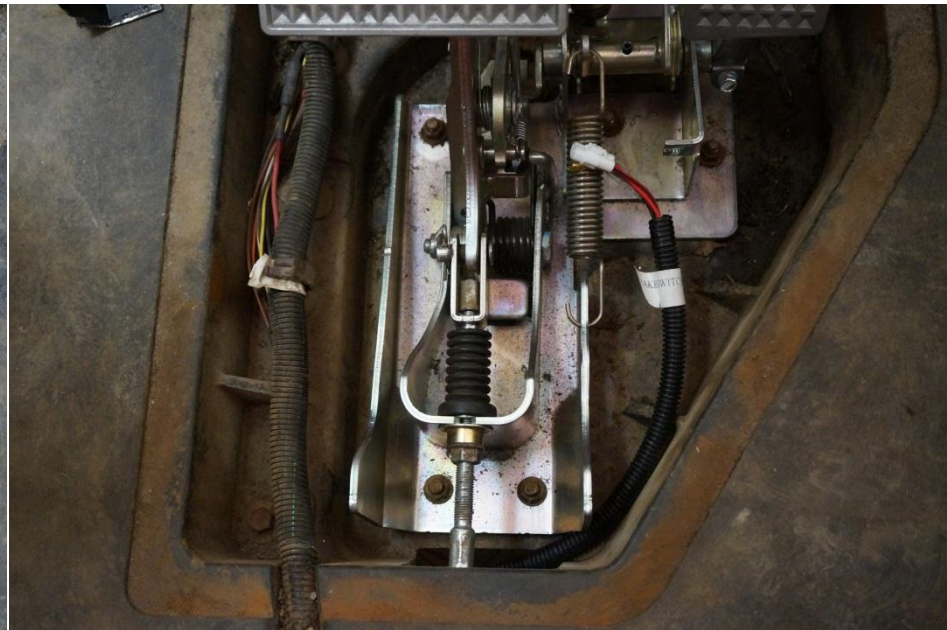


1. You will first need to determine which type of pedal assembly you have in your golf car. For these purposes, we will call the one on the left Pedal assembly 1, and the one on the right Pedal assembly 2.

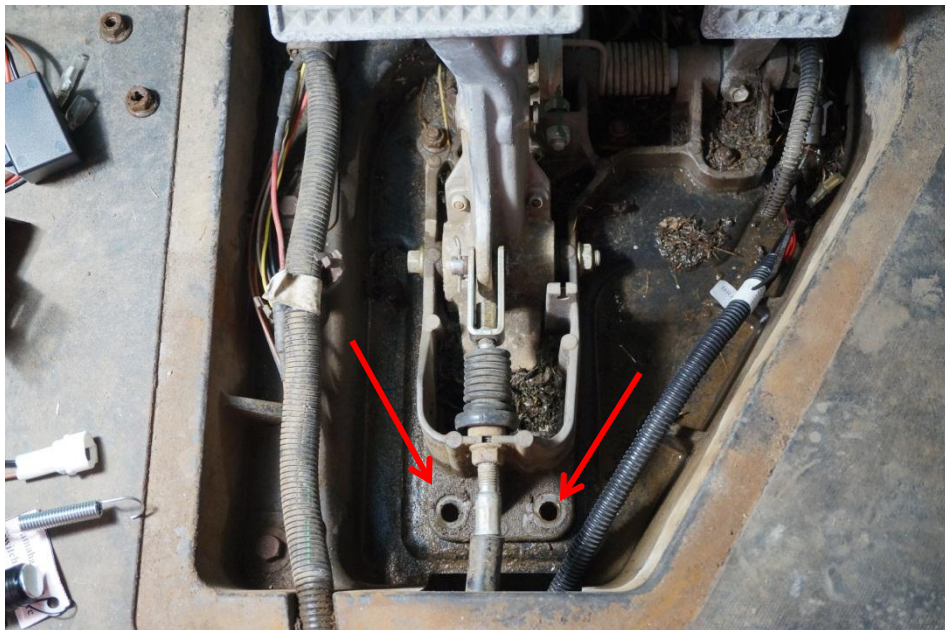
Pedal Assembly 1



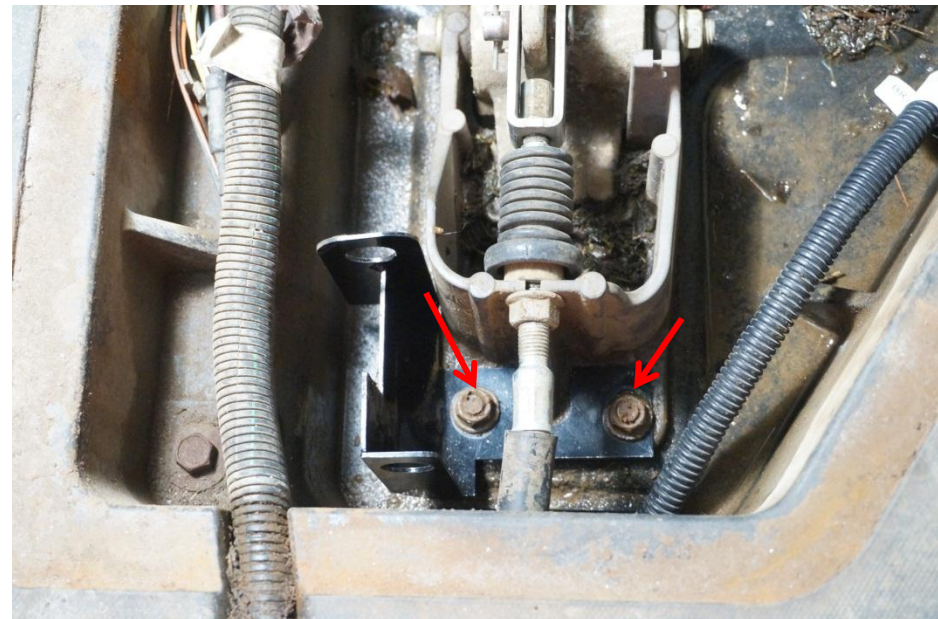
Pedal Assembly 2



1. Remove the existing mounting bolts where indicated below. (*In this illustration the bolts have been previously removed*).



2. Mount your LGT-165 Bracket as shown below. Reuse the existing hardware



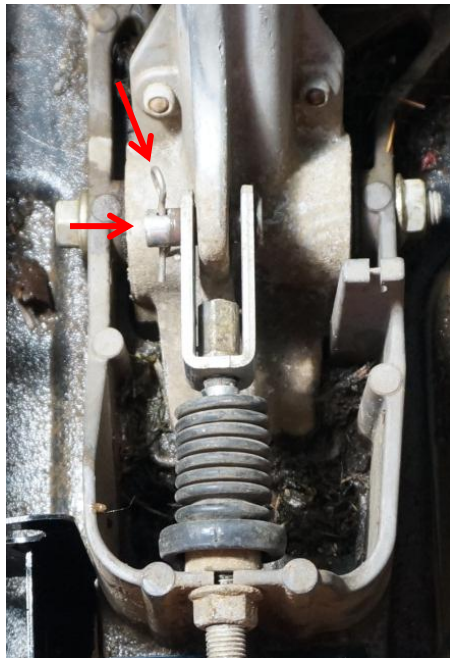


3. Next you will mount your LGT-166, brake switch and mount it to the LGT-165 Bracket. First remove the adjustment nut from the switch, mount as shown below, and replace the nut, which is indicated by the red arrow below.



4. You may now remove the existing retaining pin by removing the cotter pin on the left side, indicated by the red arrow.
5. Install the replacement retaining pin and cotter pin. This step may require the use of some of the spacers supplied for more stability of the pin.
6. Connect the brake switch spring to the retaining pin as shown below.

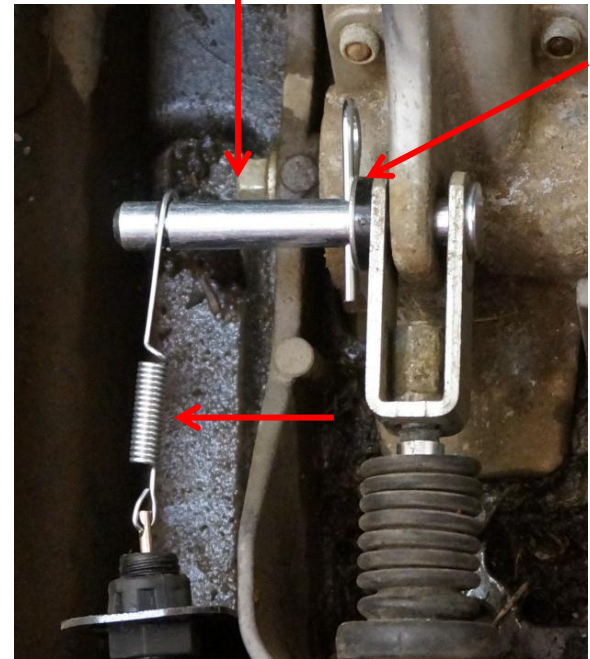
4



5 & 6

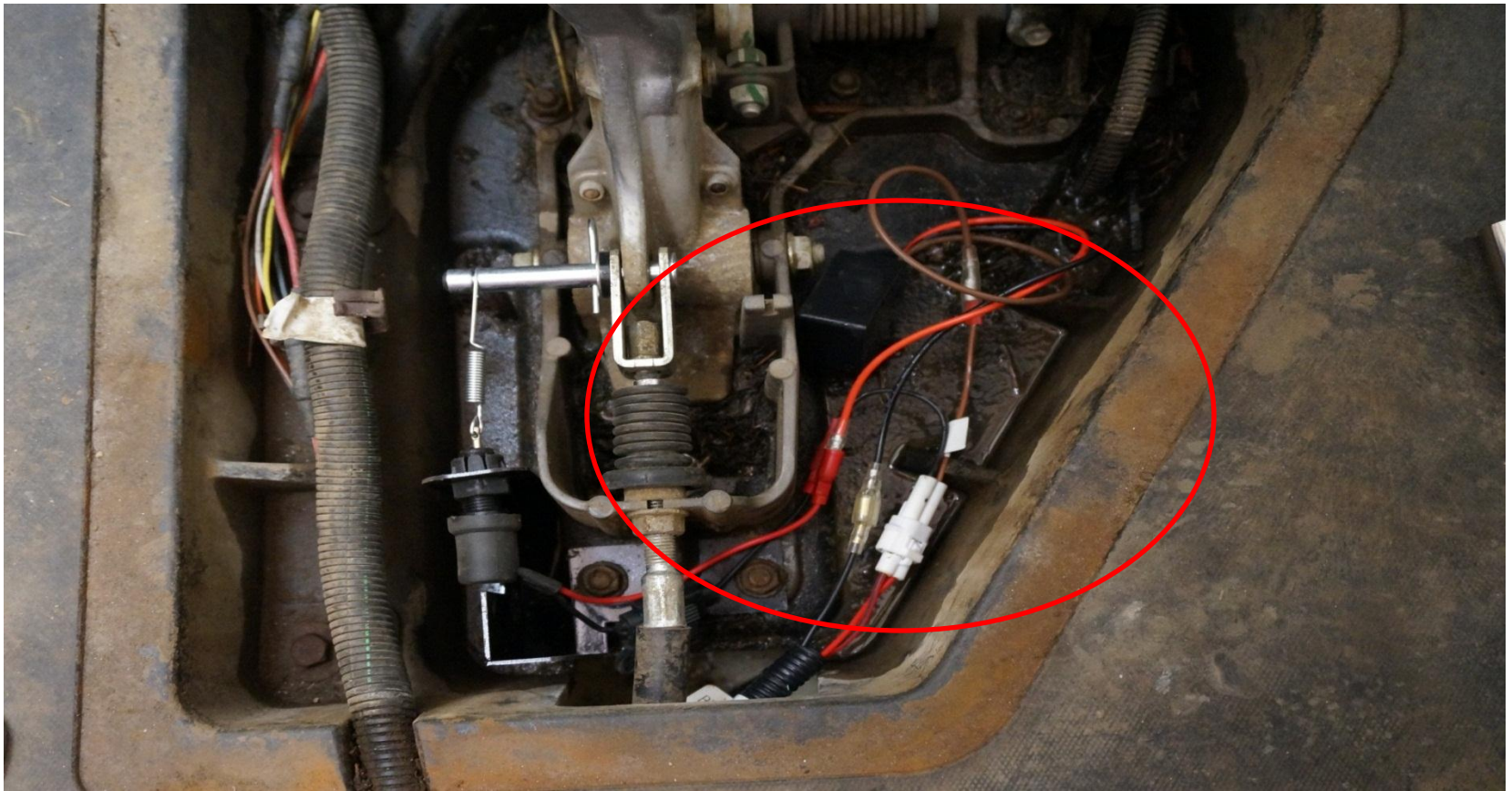
Replacement  
pin

Spacer

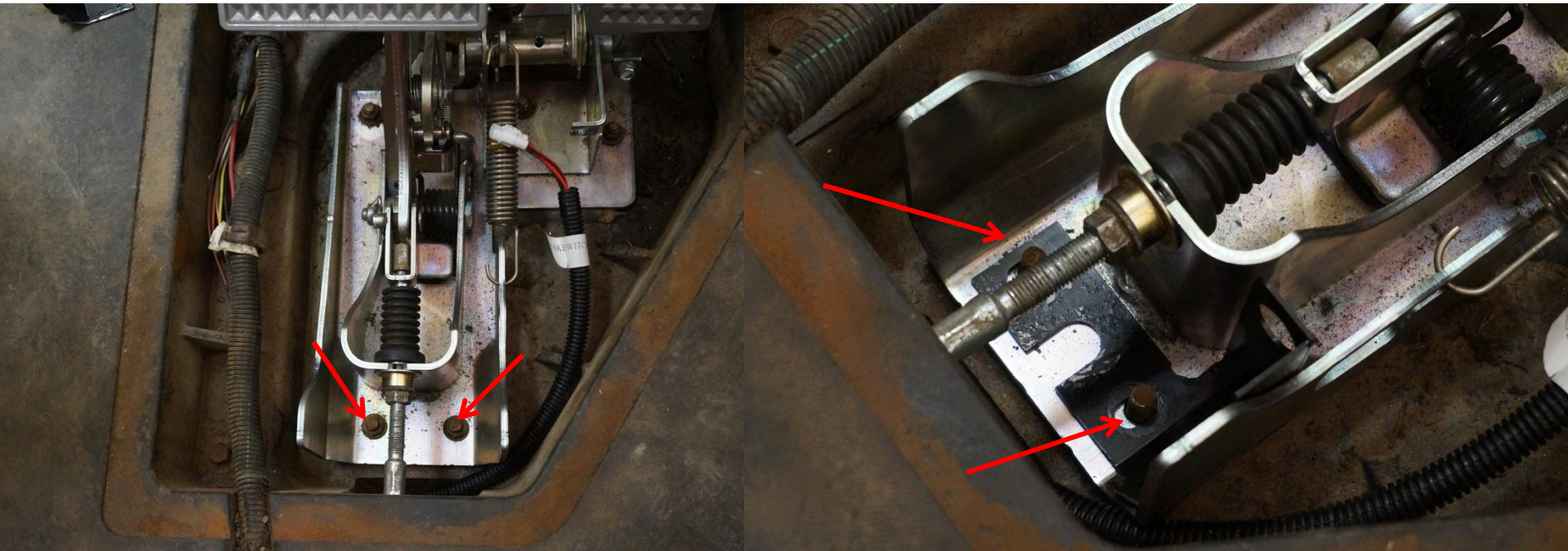




7. You may now pick a suitable mounting point for your LGT-142 Brake timer.
8. Once you have your timer mounted you may connect the wires as shown below.
  1. Connect Sub Harness LGT-162, to the white connector on the plug and play light kit harness
  2. Red wire from timer to Red wire from the switch
  3. Black wire from the timer to the Black wire from your plug and play wire harness
  4. Brown wire from the LGT-166 sub harness to the Brown wire on the LGT-162 sub harness
    - a. Black wire from LGT-166 sub harness to the black wire on your brake switch
  5. You may now “clean up” the installation by using wire ties to secure your wires out of the way of any moving parts.



Installing the LGT-164 kit on Pedal Assembly 2 is slightly different in that there is a minor, and simple, modification required to the bracket. Aside from that, all the steps indicated for installing the LGT-164 on Pedal Assembly 1 are the same for Pedal Assembly 2. See next slide for the necessary modification instructions.





Installing the LGT-164 kit on Pedal Assembly 2 requires additional clearance on the back side of the bracket as indicated in Illustration 2 below. The bracket has been designed so the back side can easily be “broken off” using a pair of pliers.

1. Using pliers, you will remove the back side of bracket LGT-164. This may require a certain amount of force, but still relatively easy to accomplish.
2. Once the back side is removed, the previous instructions may be followed for the remainder of the installation keeping in mind the brake switch is mounted on the opposite side of the pedal as shown in the next slide.

Illustration 1

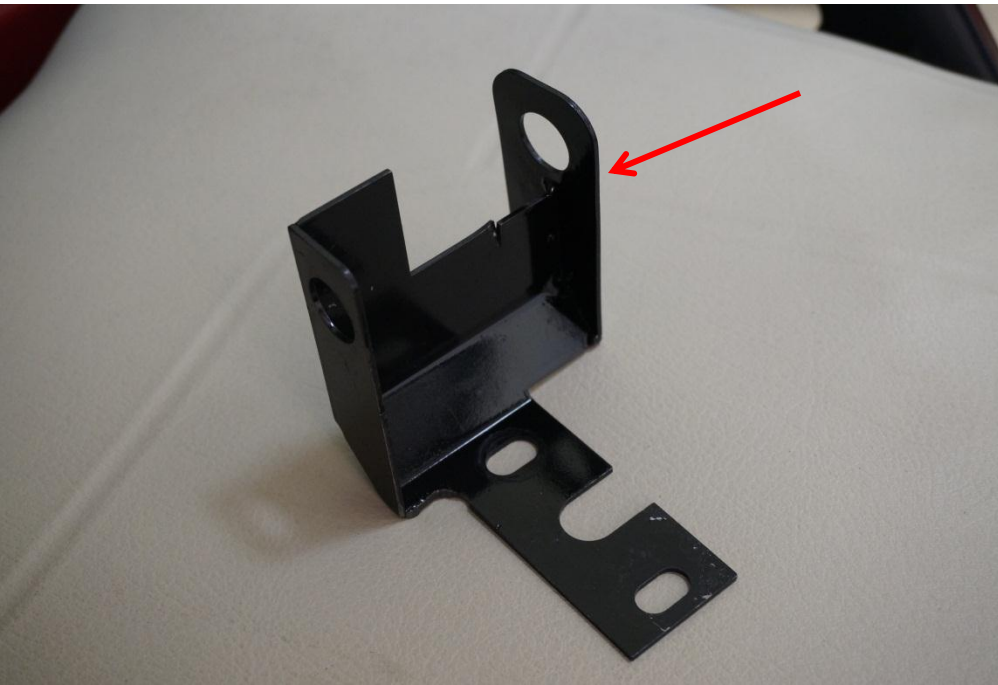
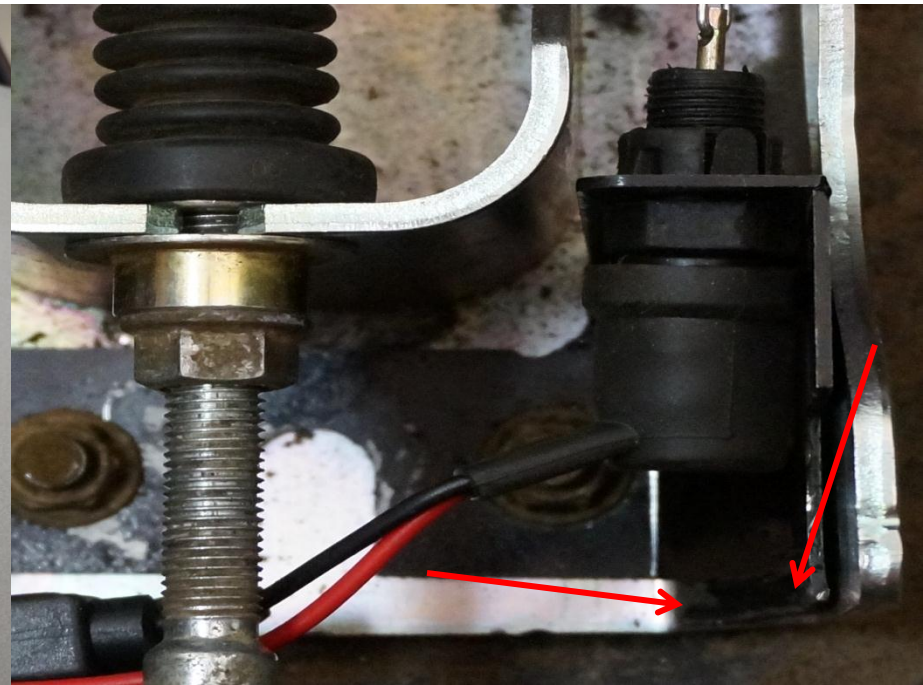


Illustration 2





The image below shows the installation as it will look when complete.

